



care
extended.

Access



101
Medical sites



90
Behavioral
health sites



61
Dental sites



54
School-based
clinics



90 NM Communities

175 Clinic sites - 80% located in rural communities with limited or no other service providers.

Service

370,000 patients from every county in New Mexico

210,000 patients under 100% Federal Poverty Level
(56% of all New Mexicans under 100%)

66,000 of clinic patients are uninsured
(1 in 3 of New Mexico's uninsured)

59% of clinic patients
have incomes
under 100% FPL and
84% of incomes
below 200% FPL

359,000 screened for depression and obesity

40,000

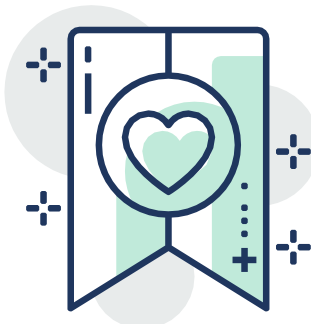
Diabetic patients

150,000

Depression and other
behavioral health patients

80,000

Oral health users



Primary Care Clinics provide the **right** services at the **right** time, to New Mexico's most vulnerable citizens in their local communities.

Primary clinics have been and remain on the front line, fighting Covid-19 in New Mexico's rural Communities.

The State and Federal investments in the Primary Care Safety Net pay healthy dividends, saving lives, dollars, and improving New Mexicans' health status.

Primary Care Clinics and our Patients thank our state partners, the Department of Health and the Human Services Department, Federal and State Legislators, and Governor Lujan Grisham.